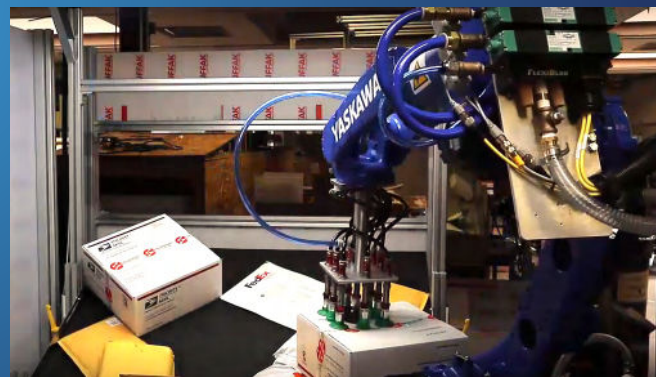


ALSTEF

GROUP



POST, PARCEL & RETAIL LOGISTICS **SOLUTIONS**



**BEYOND
AUTOMATION**



GLOBAL EXPERTS

IN MATERIALS HANDLING

Alstef Group has been delivering baggage handling systems, postal and retail logistics systems, and warehousing and distribution solutions to customers around the globe for over 60 years.

For our postal and retail logistics customers, we offer modular, scalable, solutions from simple dimensioning, weighing & scanning, and manual sorting, through to fully automated sortation systems. We partner with industry leaders to offer a wide range of sorters, modular conveyors, carousels, and other integrated technologies to provide versatile, durable, and efficient systems.

Our broad industry knowledge and decades of experience enable us to provide our customers with the best advice and solutions available.

We build partnerships.

With a comprehensive solution offering including high-level controls, supervisory software, reporting and analytics, ongoing support services, and a commitment to innovation, Alstef Group aims to ensure our customers can rely on us for the best possible products and solutions, exceptional customer service and a dedication to health and safety.



WIDE RANGE OF SOLUTIONS

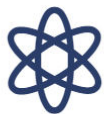
SWIVEL- WHEEL SORTER, LINEAR SORTER, SHOE SORTER, MODULAR SORTER, MULTI-BELT SORTER, LOOP SORTER, AND BOMBAY SORTER OPTIONS

Alstef Group has the skills and experience to work closely with you and your team to design and integrate a custom solution that meets all your business requirements.

Our dedicated, experienced team of mechanical, electrical, and software product developers is ready to design and innovate solutions specific to your needs. We can integrate Dimension, Weigh, Scanning (DWS) systems to protect your logistics revenue, or in-line print and apply labeling to add functionality to your automated warehouse solution plus a range of other innovations to optimize your system such as robotic induction and autonomous machine robots.



WORK WITHIN YOUR
BUILDING LAYOUT



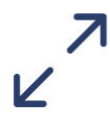
MEET ALL YOUR
OPERATIONAL PROCESS



RECOMMENDATIONS FOR
IMPROVEMENTS



INTEGRATE WITH
EXISTING SYSTEMS



EXPANDABLE SOLUTIONS
- FROM 500 TO 25,000

CUSTOM, MODULAR, PARCEL HANDLING SYSTEMS

SORTATION SYSTEMS

With over 50 years of experience in material handling, Alstef Group is a trusted integrator of diverse sortation technologies tailored to meet the unique needs of postal, parcel, and retail operations.

Our expertise covers a wide range of sortation solutions, including bombay, linear or loop cross-belt, shoe, tray, multi-belt, modular, and swivel-wheel sorters. This comprehensive knowledge, paired with our strong understanding of market demands and technologies, ensures that we provide the best-fit solution for every project.

By partnering with industry leaders, we remain agile and responsive, delivering solutions that meet both customer needs and strict project timelines. Whether it's efficiency, scalability, or performance, Alstef Group is committed to driving operational success with our sortation expertise.

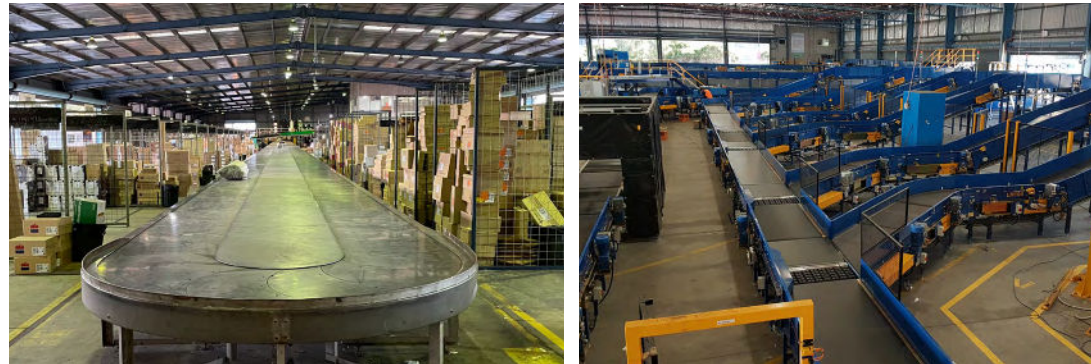
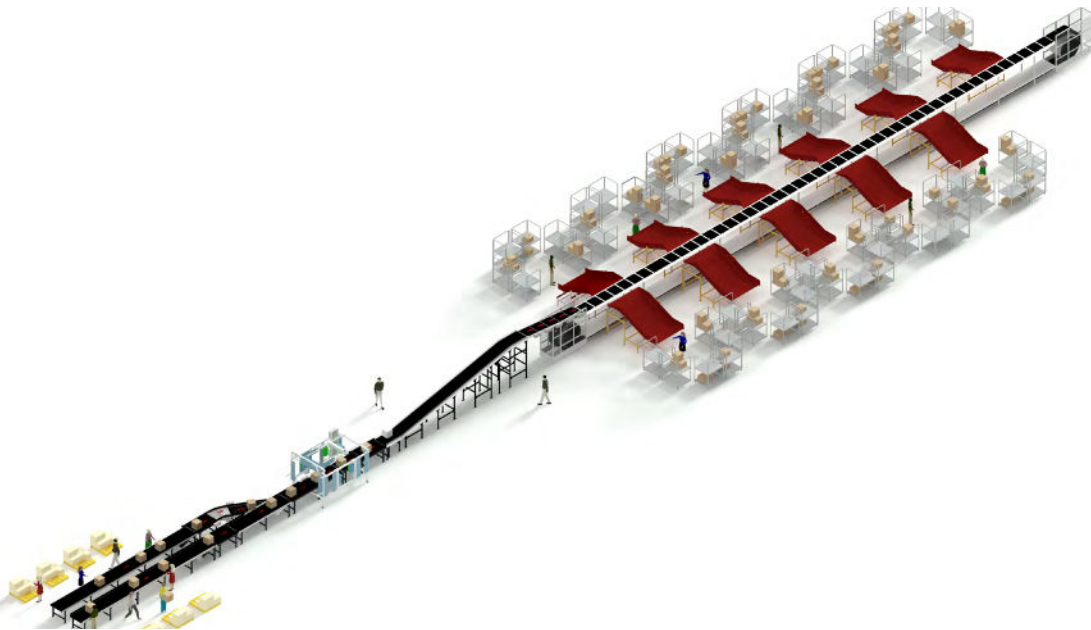
HEAVY DUTY BELT CONVEYORS AND LOGISTICS CAROUSELS

We manufacture our own range of belt conveyor products designed specifically for the parcel handling industry. The parcel handling belt conveyor product stems from our tried and tested baggage handling belt conveyor, with an additional focus on parcel transitions and operator ergonomics.

Our parcel handling belt conveyors are heavy-duty and designed to handle all types of products from larger, heavier cardboard boxes to smaller, fragile poly-bags (satchels).

Carousels are a cost-effective means of circulating freight to multiple manual sort destinations.

We have a range of proven, robust, carousel solutions incorporating positive caterpillar chain drives in our endless loop systems.



INTEGRATED TECHNOLOGIES

DIMENSIONING, WEIGHING & SCANNING (DWS)

DWS solutions aid revenue protection and revenue recovery by ensuring the courier fee aligns with the weight and dimensions of the package.

We can supply and integrate a wide range of static and dynamic DWS equipment, from camera to laser, 1-sided to 6-sided tunnels that are capable of scanning 1D and 2D bar codes.

Our software receives, interprets, and collates bar code, parcel dimension, and weight information and configures it into a format suitable for integration with your host IT systems.



LABEL PRINT AND APPLY

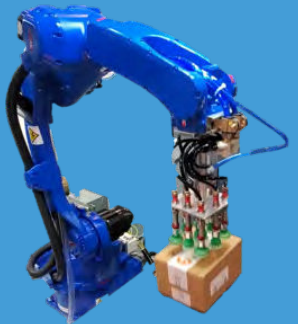
Our fully integrated labeling solutions include label media management, data management software, applicators and printer heads, barcode readers, and a sustainable 'linerless' option.

Multi-Axis Printer Applicator Solution (MAPs) provide the ability to vary the application of a label along 2-axis. Labels can be applied to avoid existing bar codes or cover existing labels on the top of cartons regardless of orientation and carton justification.



ROBOTIC INDUCTION

Using accurate and alert robots equipped with end effectors, vision systems, and AI software, robotic induction can ease the burden on human labor for any highly repetitive task such as pick from belt, bin, or chute, place on belt or container, and direct onto sortation system.



AUTONOMOUS SORTATION ROBOTS

Autonomous Sorting Systems use a configurable fleet of mobile robots (Rovers) for sorting of parcels. Rovers navigate from the 'input area' to their allocated sorting destination with very minimal human interaction providing a flexible and dynamic, low-risk solution.

Robot fleets can be easily moved between facilities with minimal set up and have no single point of failure unlike a traditional sorter.



ROBUST, SCALABLE, TAILOR MADE SOLUTIONS



COMPLETE CONTROL

SYSTEM VISUALIZATION & CONTROL, MANAGEMENT & SORTATION LOGIC, REPORTING & DIAGNOSTICS

The FAST Suite is a powerful collection of automation software designed to optimize logistics and warehouse operations. Built on a unified architecture, it seamlessly integrates with existing systems to automate key processes such as sortation, labeling, data management, and system monitoring. Its modular design allows businesses to configure solutions that meet their unique needs while maintaining scalability for future growth.

With real-time tracking, reporting, and seamless integration capabilities, FAST Suite enhances operational efficiency by reducing errors and improving decision-making. The software connects effortlessly with Warehouse Management Systems (WMS), Enterprise Resource Planning (ERP) systems, and other infrastructure components to ensure smooth data exchange and process automation.

FAST Suite's intelligent solutions, including FAST Link for streamlined communication and FAST View SCADA for real-time system visibility, provide centralized oversight and proactive issue resolution. Operators can monitor, control, and optimize automated workflows through an intuitive interface, ensuring uninterrupted operations and minimal downtime.

Designed for flexibility and high-performance automation, FAST Suite supports advanced sortation, labeling, and tracking functions to keep pace with modern logistics demands. Its scalable, future-ready design empowers businesses to improve throughput, maintain compliance, and adapt quickly to changing operational requirements.



COMPREHENSIVE SUPPORT

TAILORED SUPPORT PACKAGES TO SUIT ALL REQUIREMENTS

Alstef Group allows you to tailor a package from our wide range of maintenance services including, local support, 24/7 phone support, spare parts support, regular scheduled preventative maintenance services, and system health checks.

Alstef Group has several maintenance engineering tools featuring multiple functionalities including tracking and planning of maintenance schedules and monitoring of works in progress relating to the system. Our solutions can facilitate the management of spare parts stock - including inventories, entries/exits, purchases, etc, and the management of both material and human resources.



AN EXTENSIVE MAINTENANCE PROGRAMME

We offer an extensive maintenance programme for every component of the system.



SOFTWARE SUPPORT

Our internet/dial-in-based 24-hour remote support provides immediate on-line system monitoring.



SPARE PART SALES AND SUPPORT

Fast and easy access to spare parts is essential for the continuous, successful running of your system.



SYSTEM EVALUATION AND INSPECTIONS

We can send qualified engineers to your site to undertake a complete evaluation of the current condition of the system and assist the site's local coordinators in understanding areas to monitor.

ALSTEF GROUP



CUSTOMER FOCUS



INNOVATION



KNOW-HOW



COMMITMENT

ALSTEF
GROUP
VALUES



TEAM SPIRIT

FRANCE | NEW ZEALAND | AUSTRALIA | USA | CANADA | INDIA | CHILE | MEXICO | PERU
CROATIA | ROMANIA | BULGARIA | TURKEY | BRAZIL | SOUTH AFRICA | COSTA RICA | SINGAPORE



www.alstefgroup.com